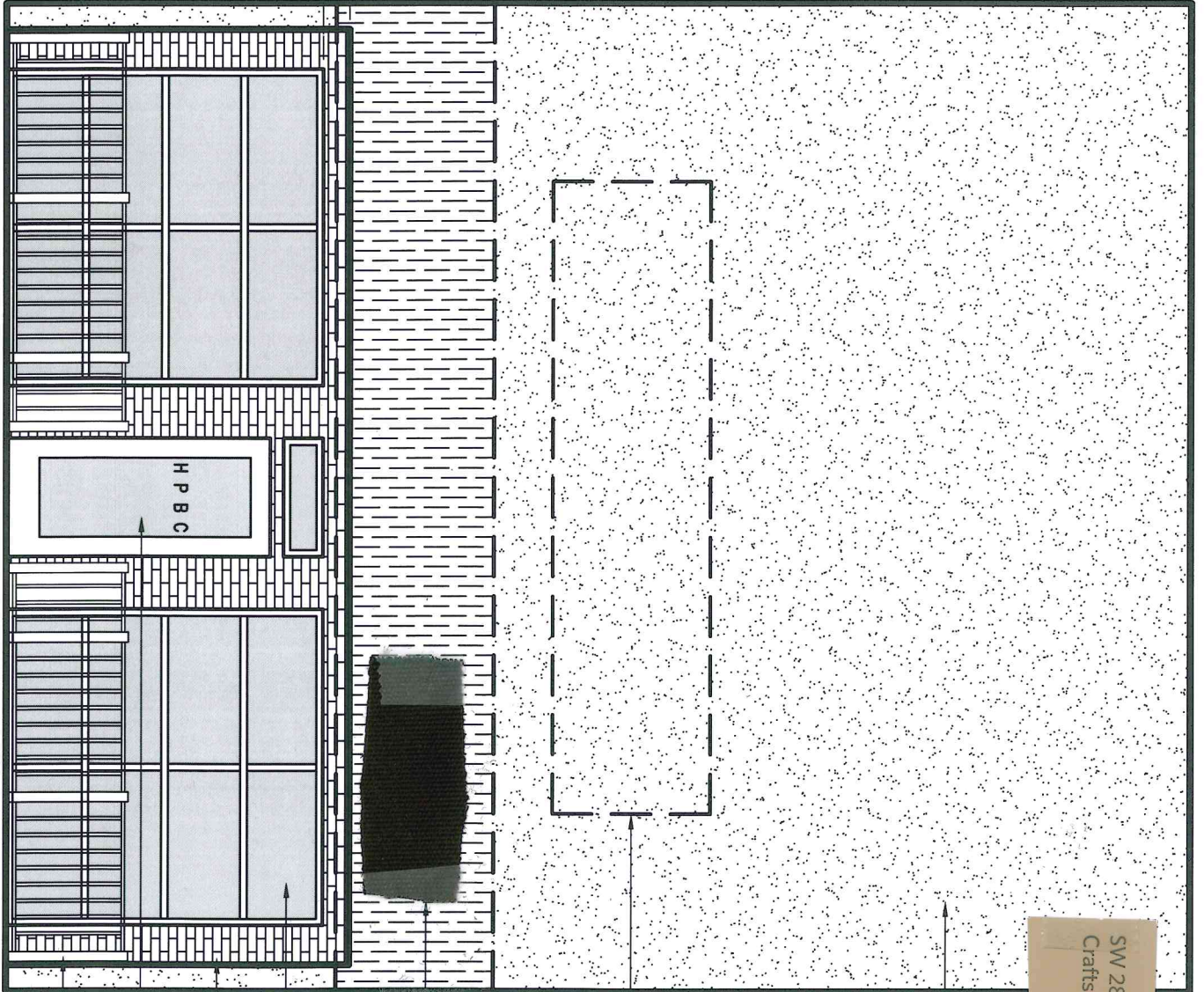
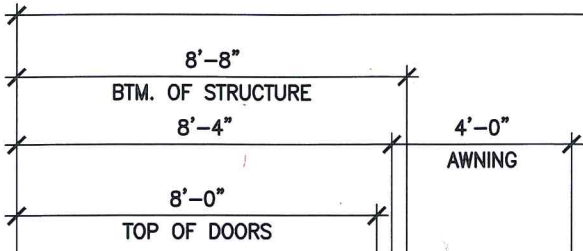


±30'-0"



FRONT ELEVATION

SW 2835
Craftsman Brown

PAINT EXISTING
STUCCO WALLS

SIGNAGE AREA

NEW FABRIC CANOPY
BY OTHERS

NEW GLASS ROLL-UP DOORS

NEW BRICK VENEER
AT RECESSED AREA

NEW STOREFRONT GLASS DOOR

NEW METAL RAILING (+36" HIGH)

SW 2836
Quartersawn Oak